



XIA Configuration Server 2011

Cloud Services Quick Start Guide

Tuesday, 04 October 2011

Contents

Overview	3
Creating an Account	4
XIA Configuration Client Prerequisites	6
XIA Configuration Client Installation	7
Configure the Client	11
Need more help?	16

Overview

Welcome to the XIA Configuration Hosted Cloud Services quick start guide.

Cloud Services removes the need to download and install XIA Configuration server and it's prerequisites such as SQL Server and IIS on your network and makes your configuration data available to you from anywhere in the world.


Benefits

- Get up and running quickly
- Always use the latest version of XIA Configuration Server
- Easily migrate from trial to production systems

You simply download and install the XIA Configuration Client on your network and start uploading configuration data to the XIA Configuration Cloud Service.

Creating an Account

- Go to the CENTREL Solutions web site and select the hosting information page <http://www.centrel-solutions.com/xiaconfiguration/hosted.aspx>
- Complete the online form and you will be provided with a username based on your company to login to the system.

**Hosting Environment Ready!**

URL <https://www.centrel-solutions.com/cloud>

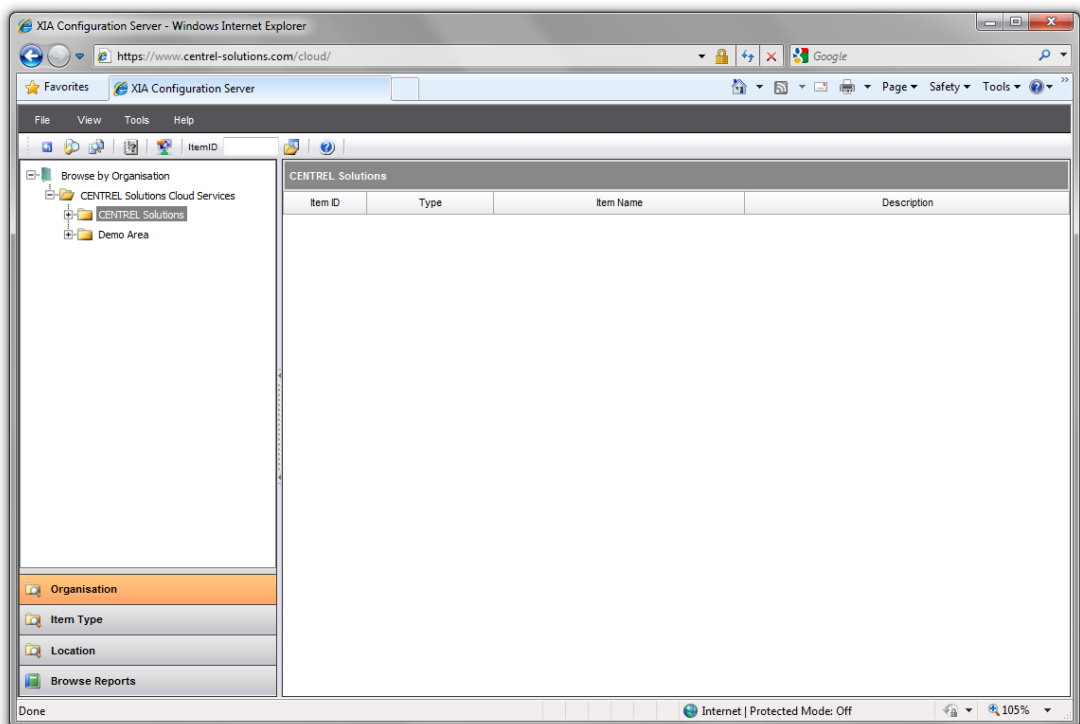
Username DemonstrationInc

Password [As Requested]

- Logon to the cloud service at the following address using your new username and the password you provided

<https://www.centrel-solutions.com/cloud>

- You will see a container has been created for you to store your new items. Initially there will be no items in this container.



- From the home page download the XIA Configuration Client, this is the software that scans your network machines and uploads data to the server.



The XIA Configuration Client allows you to scan one or more items found within your IT infrastructure and send that data back to the XIA Configuration Server.

[Download the XIA Configuration Client](#)

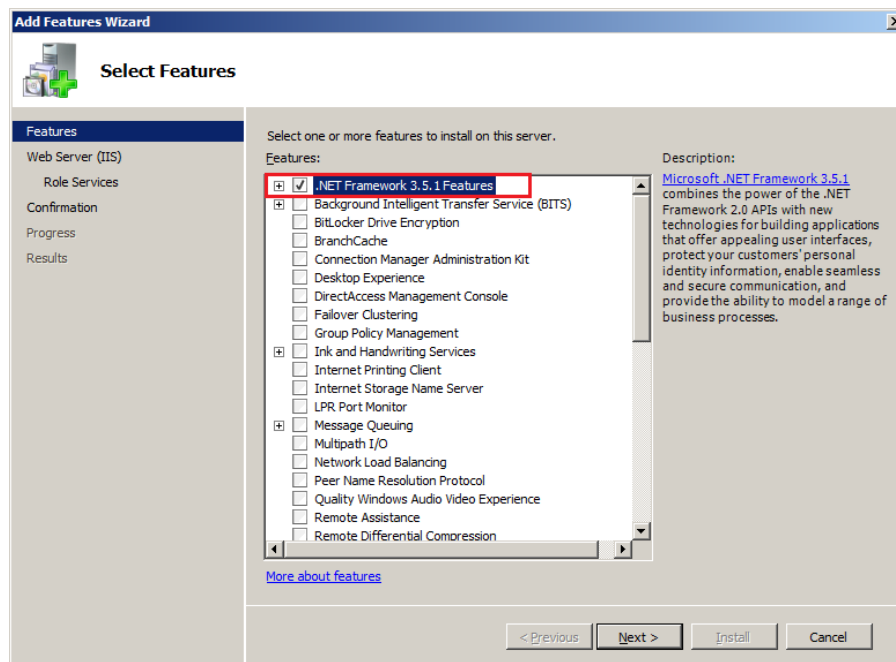
XIA Configuration Client Prerequisites

The XIA Configuration Client is a Windows Service application that can scan Windows Machines, Active Directory, SQL Instances, Microsoft Exchange and other technologies from a single server.

The following requirements must be met for the installation

- The Server must be running Windows Server 2003 above
Windows Vista and Windows 7 are supported for test and evaluation purposes only.
- Microsoft .NET 2.0 or greater must be installed.

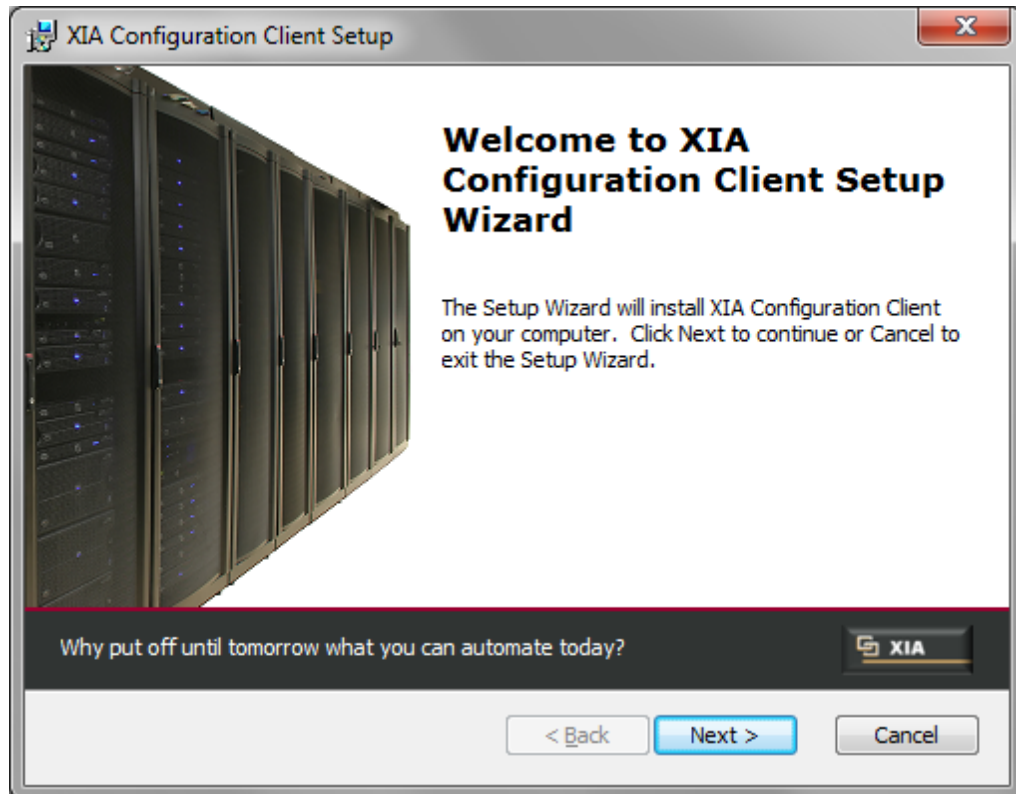
(**NOTE:** For Windows 2008 R2 please install the *.NET Framework 3.5.1 Features* within the Add Features wizard).



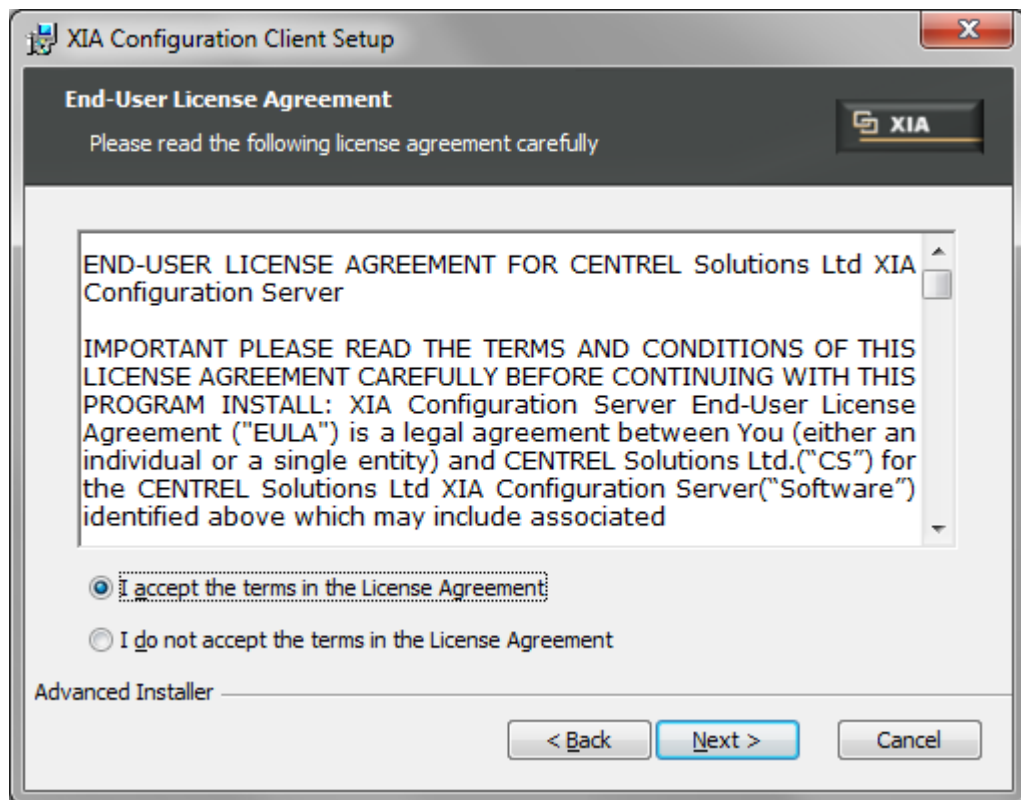
- A dedicated user account should be created with administrator rights over the machines you wish to scan. You will be prompted for these credentials as part of the installation process.

XIA Configuration Client Installation

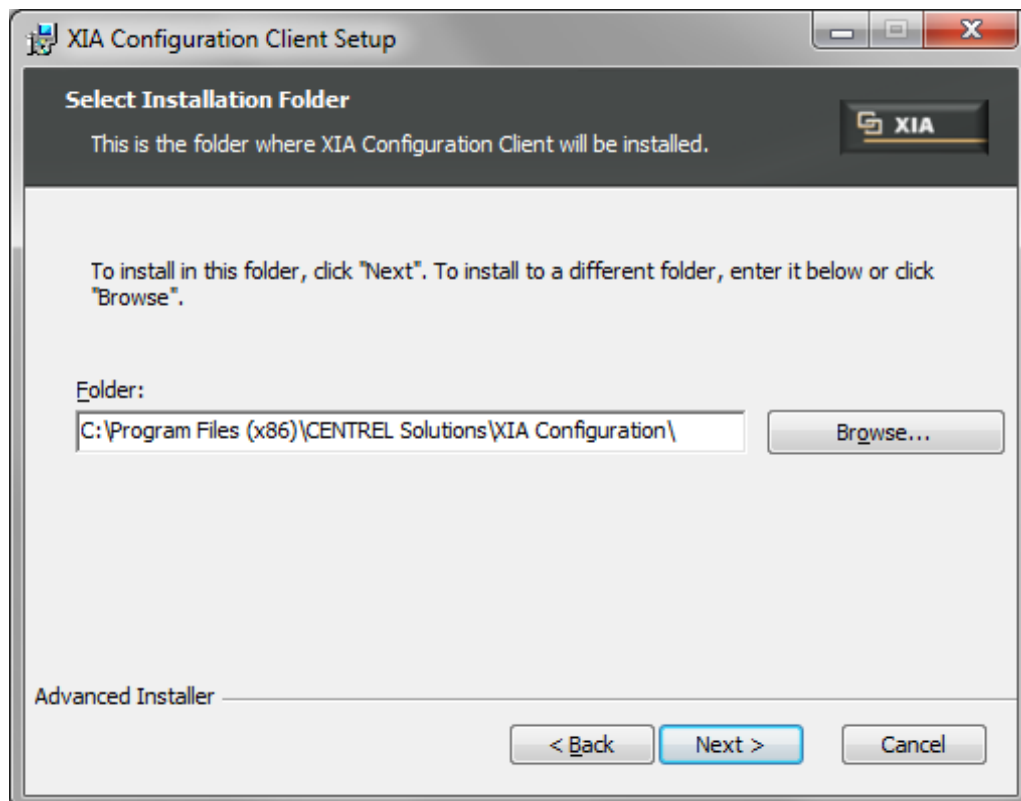
- Start the installation



- Read the end user license agreement



- Select the installation directory



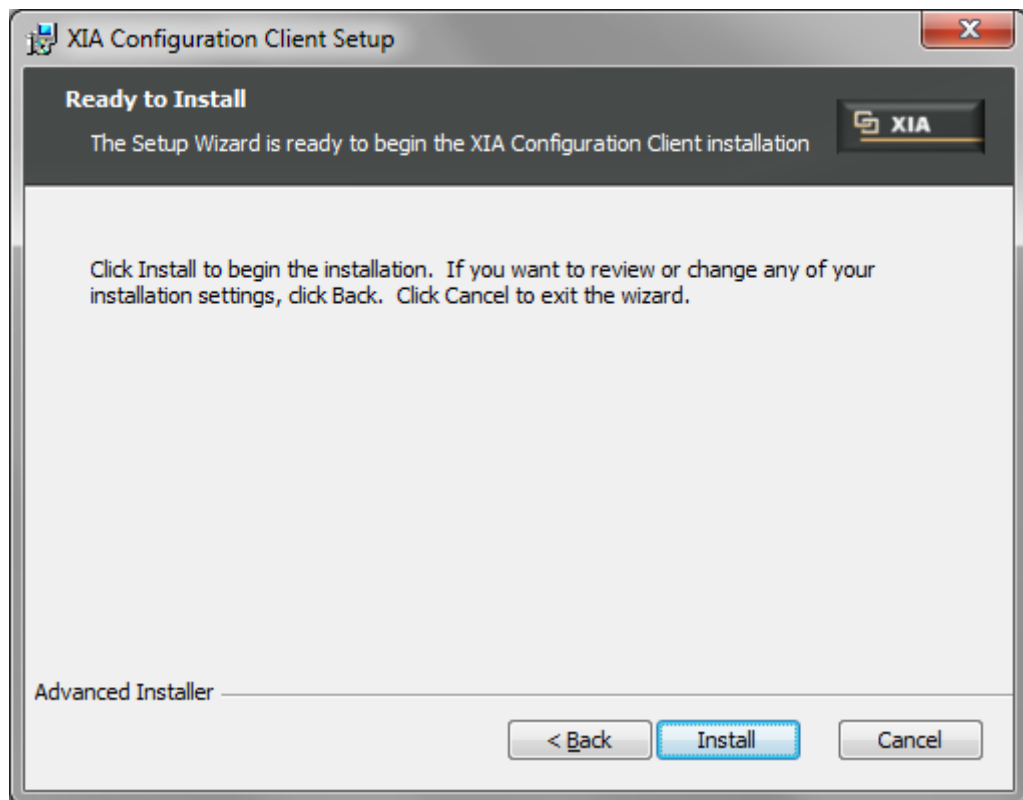
- Enter the administrator credentials that you have created for scanning the network and click validate to confirm they are correct.

The screenshot shows the 'Client Service Account' step of the XIA Configuration Client Setup. The window title is 'XIA Configuration Client Setup'. The subtitle is 'Client Service Account' with the instruction 'Enter the credentials for scanning the network'. There is an XIA logo in the top right corner. The form contains three input fields: 'Username' with the value 'svcAdministrator', 'Domain' with the value 'CENTREL-WS02', and 'Password' with masked characters. A 'Validate' button is to the right of the password field. Below the fields is a warning box with a shield icon and the text: 'This account is used to connect to and document machines on the network. This account therefore needs sufficient privilege to perform these tasks.' At the bottom, there is an 'Advanced Installer' label and three buttons: '< Back', 'Next >', and 'Cancel'.

- Tick **Use Cloud Services** when prompted

The screenshot shows the 'Client Settings' step of the XIA Configuration Client Setup. The window title is 'XIA Configuration Client Setup'. The subtitle is 'Client Settings' with the instruction 'XIA Configuration Client Settings'. There is an XIA logo in the top right corner. The form contains a 'TCP Port' field with the value '8091'. Below it is a checkbox labeled 'Preconfigure the Client Service' which is checked. Underneath this checkbox is a text box for 'XIA Configuration Server URL (optional)' containing the value 'https://www.centrel-solutions.com/cloud'. At the bottom of this section is another checked checkbox labeled 'Use Cloud Services'. At the bottom of the window, there is an 'Advanced Installer' label and three buttons: '< Back', 'Next >', and 'Cancel'.

- Start the installation when ready.

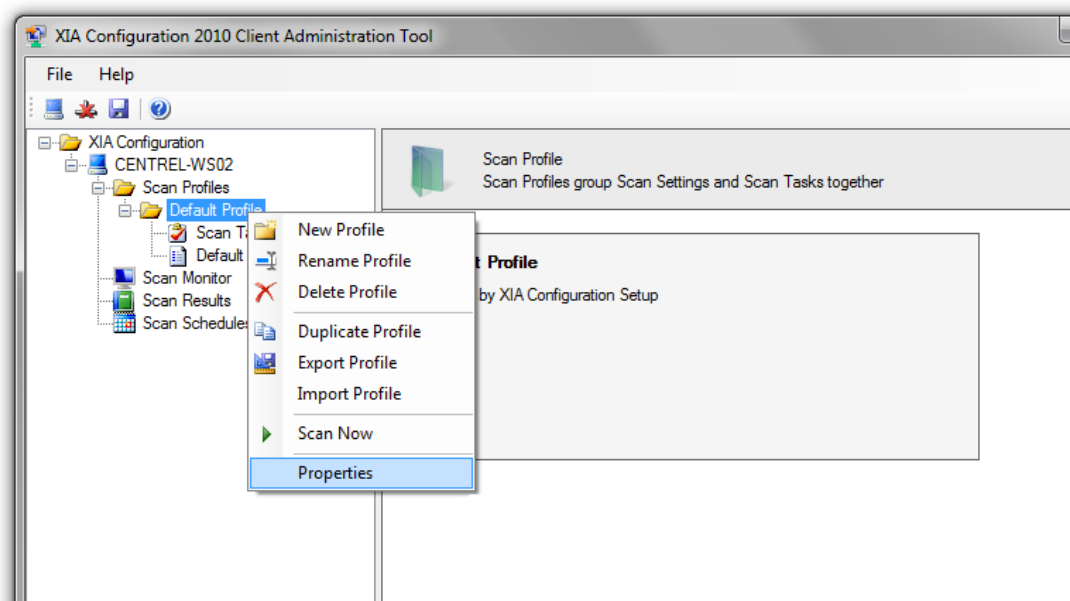


Configure the Client

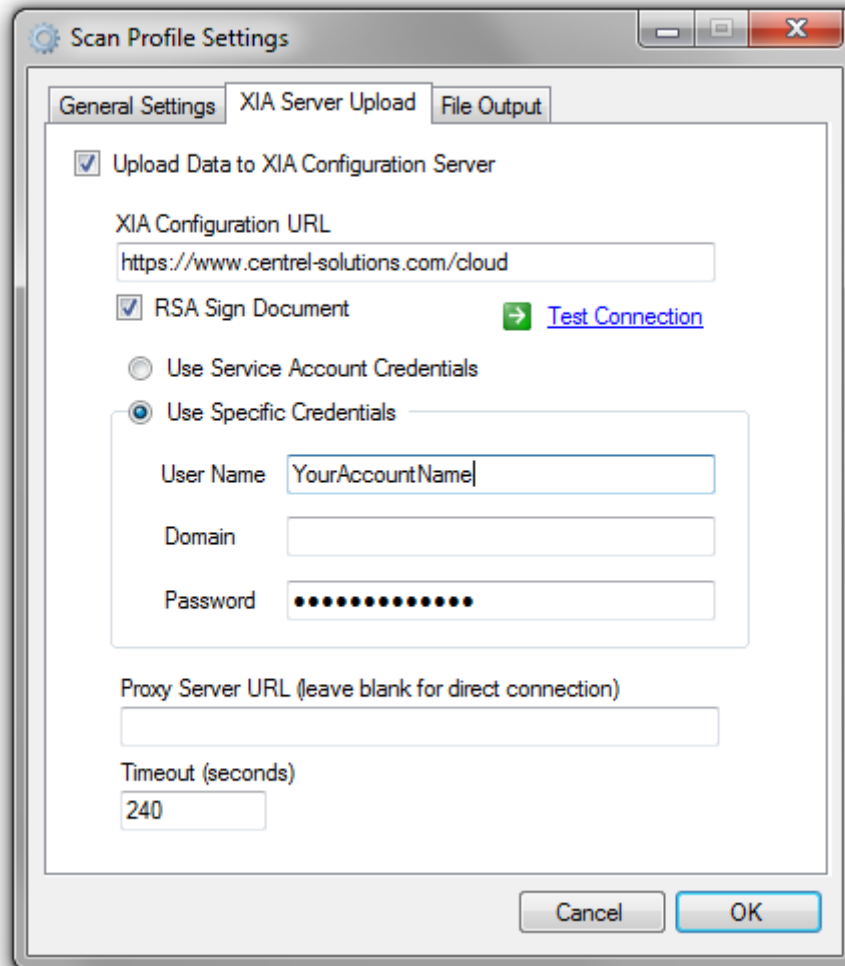
- Once the installation is complete click the Configure Client button (you can also access the client configuration tools from the Start Menu).



- Within the client tools right click the **Default Profile** and select properties

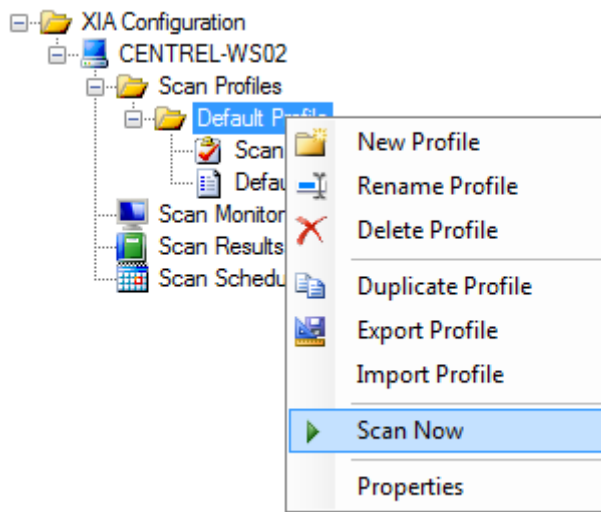


- On the **XIA Server Upload** tab
 - Select Use Specific Credentials
 - Enter your Cloud username
 - Enter your Cloud password

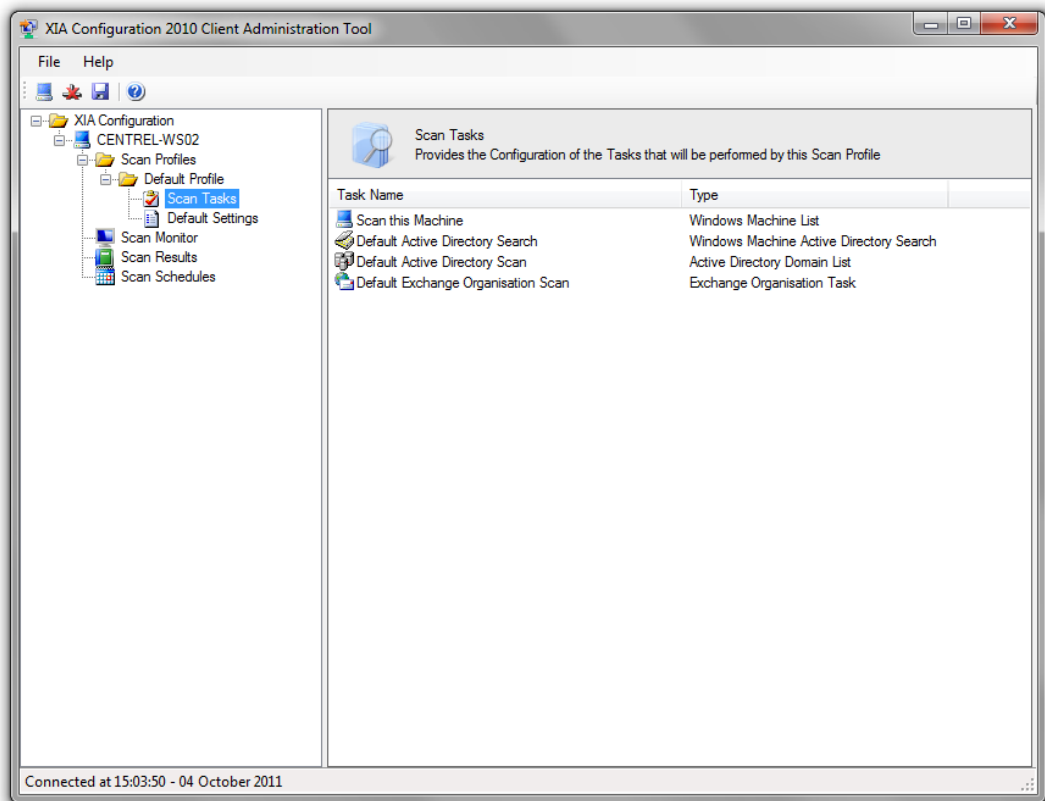


- Click **Test Connection** to confirm the credentials
- Click OK

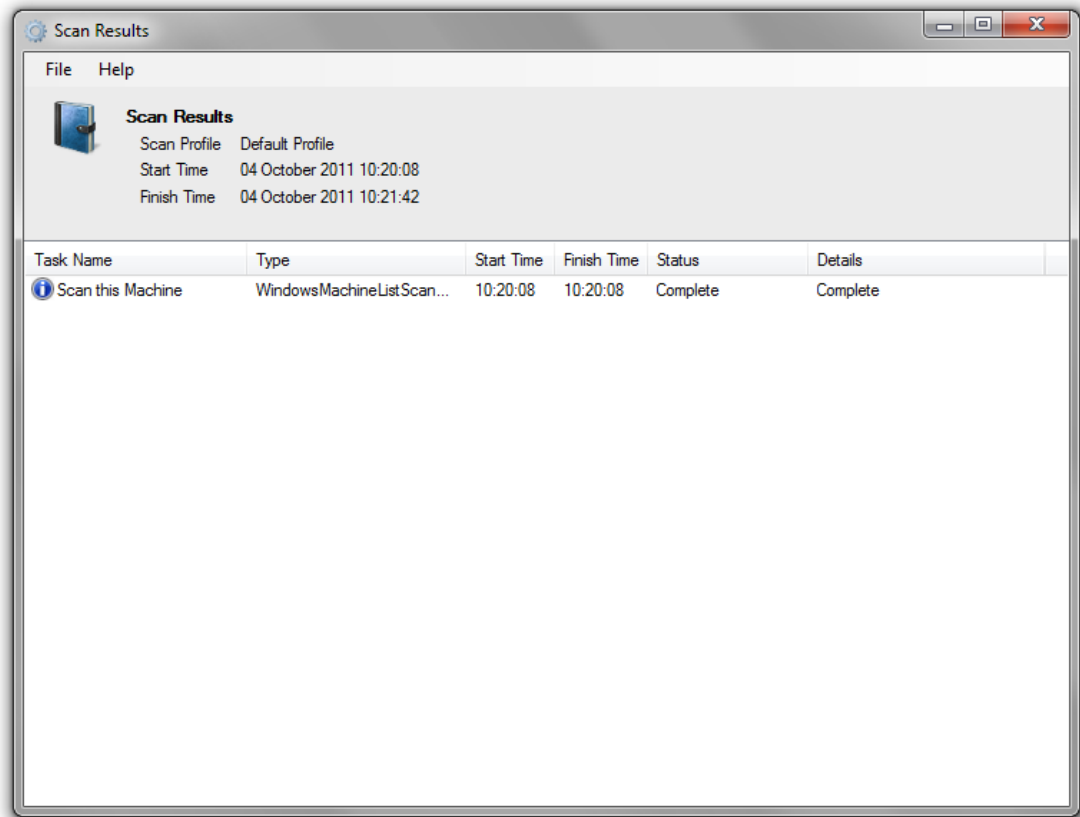
- Right click on the Default Profile and click scan now
NOTE: This will start a scan of Active Directory and document the servers and services it finds. If you wish to document specific machines please see the next step.



- To document specific items select **Scan Tasks** and modify the scan tasks as required. Press F1 for more detailed information about scan tasks.



- Once the scan is complete review the Scan Results and correct any issues you may find.



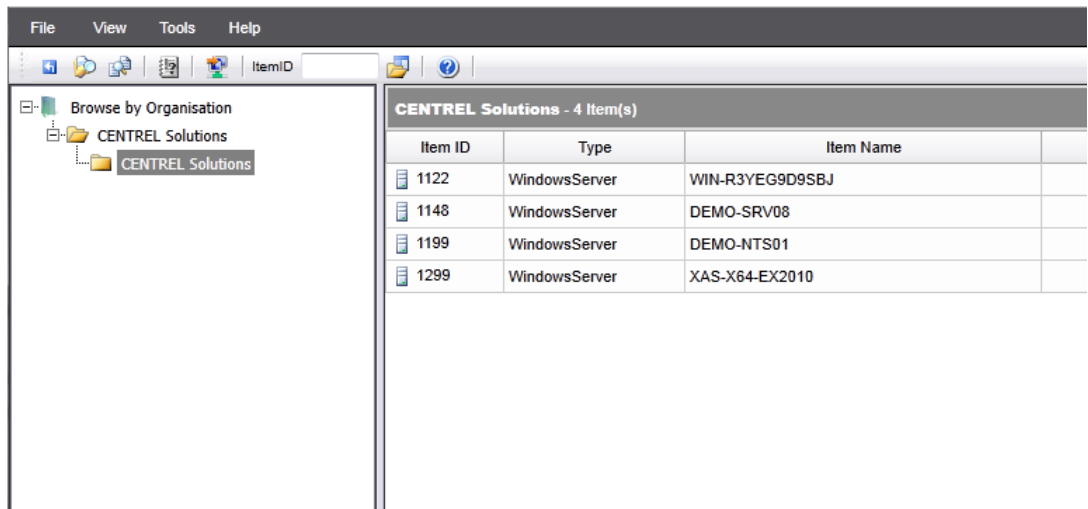
Typically issues are caused by

Computers being listed in Active Directory that have since been decommissioned

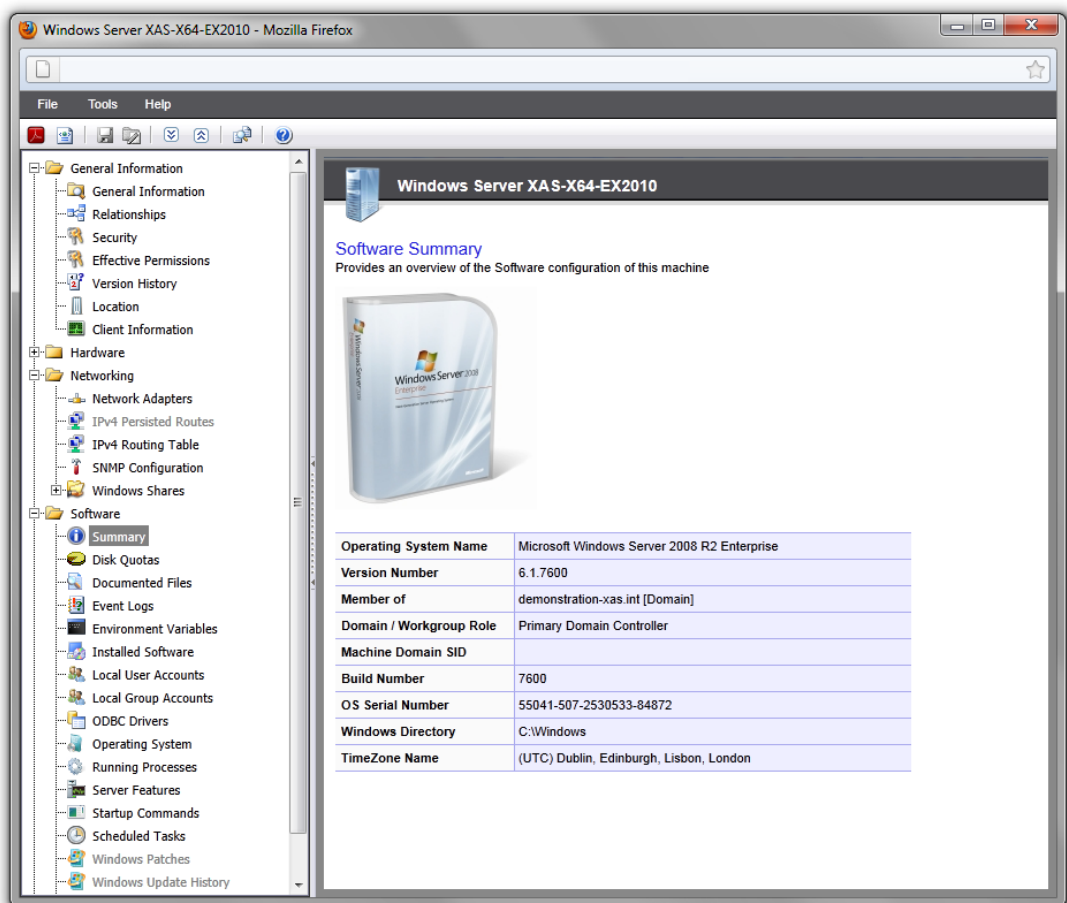
Firewalls are blocking access to remote machines

The XIA Configuration Client service account does not have sufficient permissions.

- Logon to the XIA Configuration Cloud Service and ensure that your items are visible



- Double clicking an item will display the full details for that item.



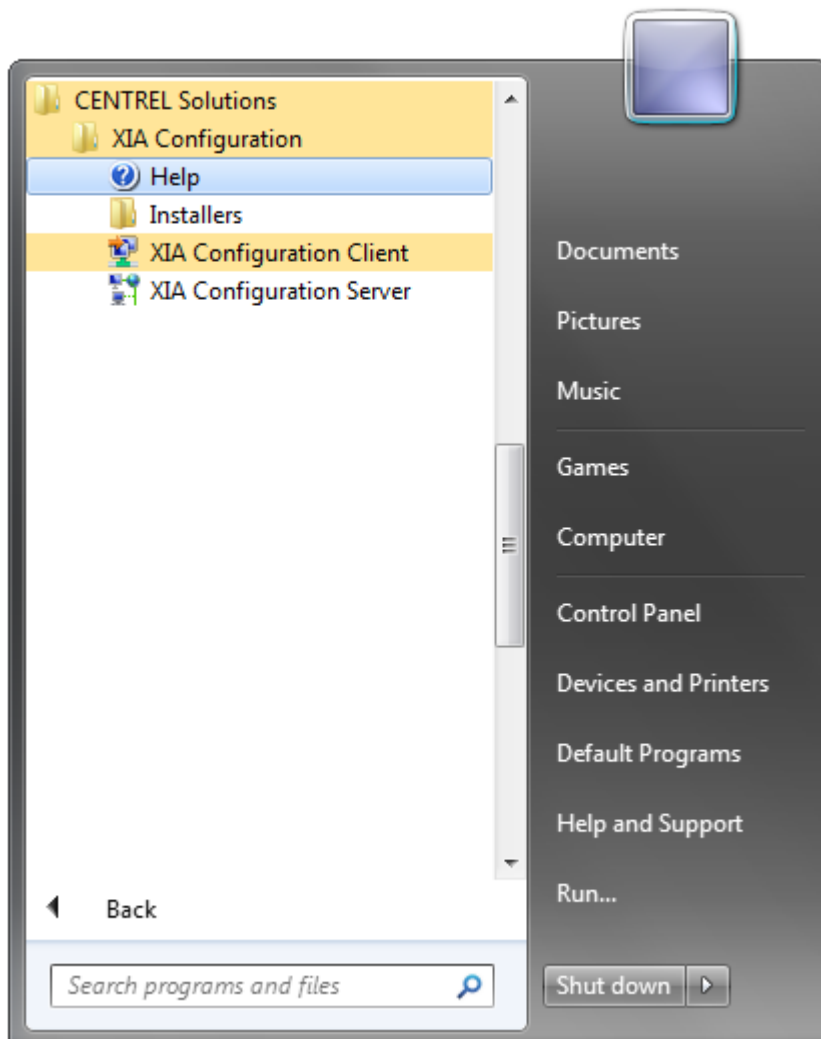


Need more help?

If you would like more Help with XIA Configuration please see the XIA Configuration support page. This includes a link to the main XIA Configuration Server admin guide and information about our remote support assistance.

<http://www.centrel-solutions.com/XIAConfiguration/support.aspx>

Full help is available from directly within the XIA Configuration Client, or from the Start Menu



You can contact us directly on support@centrel-solutions.com