

# XIA Configuration Server

Version 11.1 Upgrade Notes



# Table of Contents

XIA Configuration Version 11.1	3
Upgrading from a version older than v11.0?	3
T00571 - BREAKING: PowerShell version 3.0 is now a prerequisite.	4
T00580, T00581, T00582, T00592, T00594 - Unix and Linux Systems	4
E90679 - Added the ability to read command outputs on supported network switches.	5

# XIA Configuration Version 11.1

XIA Configuration Server version 11.1 provides improved support for Unix systems and network switches including the ability to collect VLAN information and command outputs from network switches, improved support for SSH connections including fingerprint checks, and various bug fixes and other improvements.

## Upgrading from a version older than v11.0?

If you're upgrading from a version older than v11.0, please also check the previous version upgrade notes.

- [Version 11.0 upgrade notes](#)
- [Version 10.3 upgrade notes](#)
- [Version 10.2 upgrade notes](#)
- [Version 10.1 upgrade notes](#)
- [Version 10.0 upgrade notes](#)
- [Version 9.1 upgrade notes](#)
- [Version 9.0 upgrade notes](#)
- [Version 8.2 upgrade notes](#)

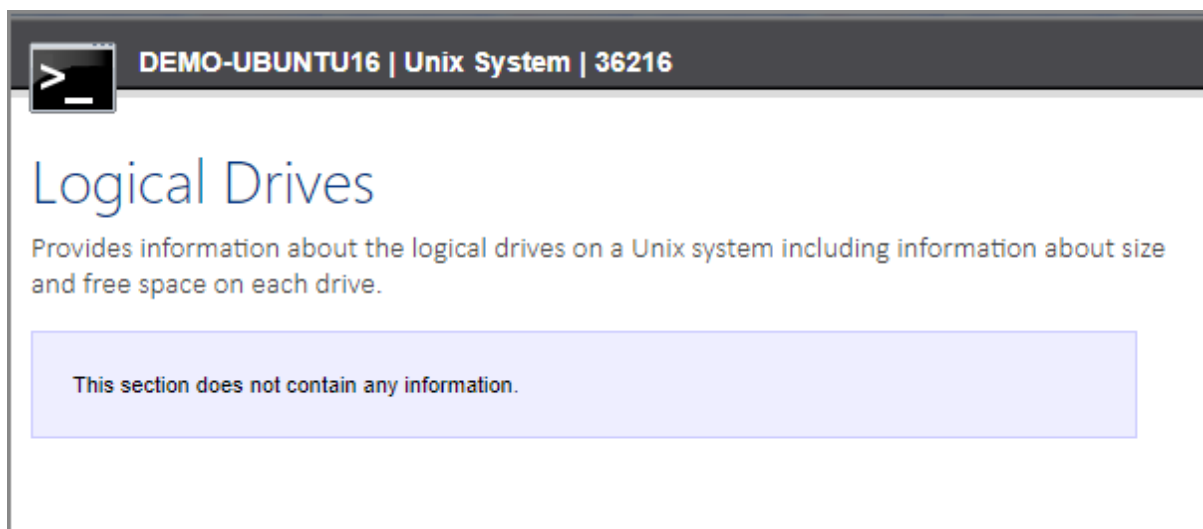
## T00571 - BREAKING: PowerShell version 3.0 is now a prerequisite.

Both the XIA Configuration Server and XIA Configuration Client installations now require PowerShell 3.0 or above.

This requirement only applies to Windows Server 2008 R2, as PowerShell version 3.0 is installed by default on Windows Server 2012 and above.

## T00580, T00581, T00582, T00592, T00594 - Unix and Linux Systems

Due to data changes, existing Unix and Linux based systems must be re-scanned using the version 11.1 agent before full information for these systems will be displayed.

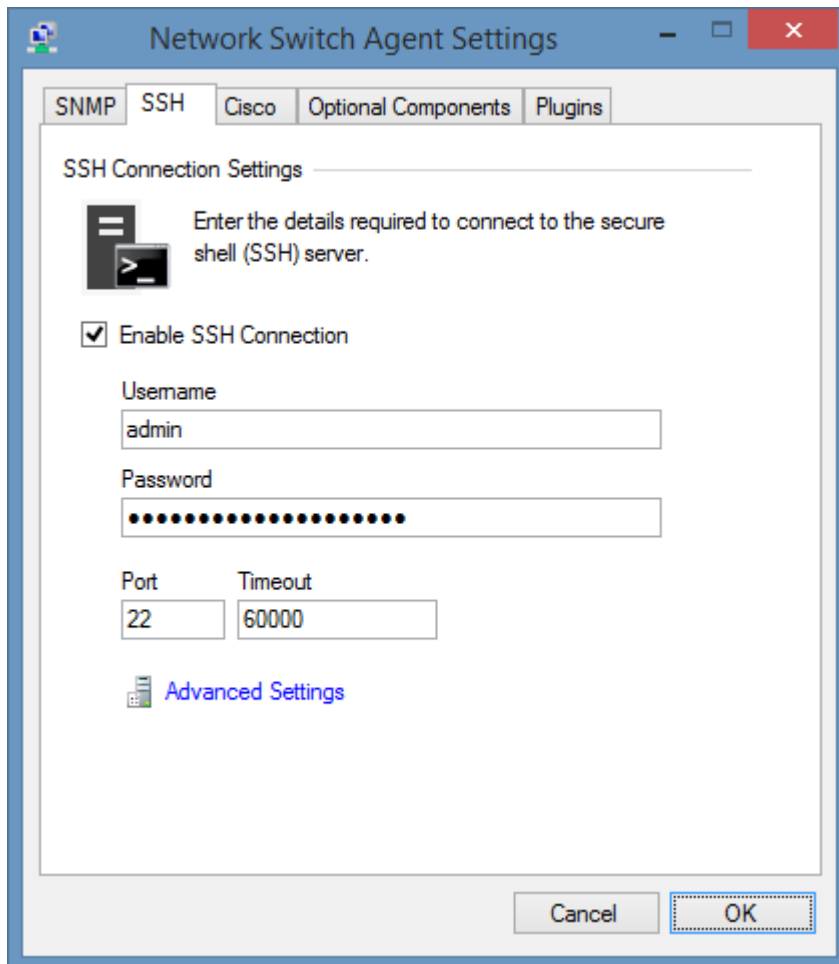


The screenshot shows a terminal window with a dark header bar. On the left of the header is a terminal icon with a prompt character '>'. To the right of the icon, the text 'DEMO-UBUNTU16 | Unix System | 36216' is displayed. Below the header, the main content area has the title 'Logical Drives' in a large blue font. Underneath the title is a descriptive sentence: 'Provides information about the logical drives on a Unix system including information about size and free space on each drive.' At the bottom of the content area, there is a light blue rectangular box containing the text: 'This section does not contain any information.'

## E90679 - Added the ability to read command outputs on supported network switches.

New functionality has been added to allow reading the command outputs for supported network switches, for this information to be available the following must be configured

SSH settings and credentials



The Cisco enable secret if using Cisco Catalyst or Nexus switches.

