

# XIA Configuration Server

Version 16.0 Upgrade Notes



# Table of Contents

XIA Configuration Version 16.0	3
Upgrading from a version older than v15.2?	3
E91077 - Added a new Entra directory item type	4
E91078 - Added a new Microsoft 365 organization scan task	5
T01092 - BREAKING: New "Microsoft 365 Agent UI" tool	6
T01118 - BREAKING: Microsoft DNS Server Root Hints	7

# XIA Configuration Version 16.0

XIA Configuration Server version 16.0 includes:

- A new Entra Directory agent and item type.
- The ability to scan Entra (previously Azure Active Directory) information without needing an Azure subscription.
- A new Microsoft 365 organization scan task that supports both Entra directories and Exchange Online organizations.
- A completely re-written Azure tenant agent that no longer depends on the Az PowerShell cmdlets.
- A new unified "Microsoft Online Agent UI" tool.
- Improved and simplified Enterprise Custom license groups.
- Various bug fixes and improvements.

## Upgrading from a version older than v15.2?

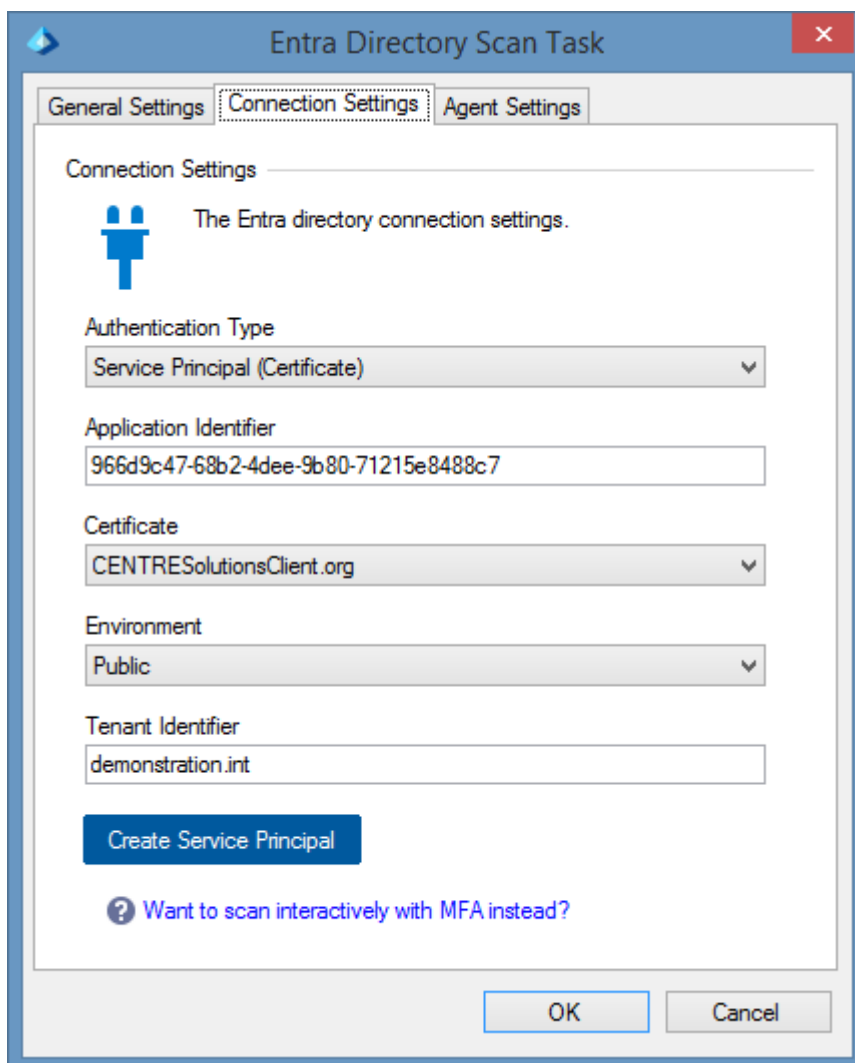
If you're upgrading from a version older than v15.2, please also check the previous version upgrade notes.

- [Version 15.2 upgrade notes](#)
- [Version 15.1 upgrade notes](#)
- [Version 15.0 upgrade notes](#)
- [Version 14.2 upgrade notes](#)
- [Version 14.1 upgrade notes](#)
- [Version 14.0 upgrade notes](#)
- [Version 13.1 upgrade notes](#)
- [Version 13.0 upgrade notes](#)
- [Version 12.2 upgrade notes](#)

## E91077 - Added a new Entra directory item type

A new Entra directory item type and scan task has been added allowing user to document their Entra directory without needing an Azure subscription.

The Azure Active Directory section has been removed. Users that currently use the Azure Active Directory section should add a new Entra Directory scan task or use the new Microsoft 365 scan task if both Entra Directory and Exchange Online is being scanned.



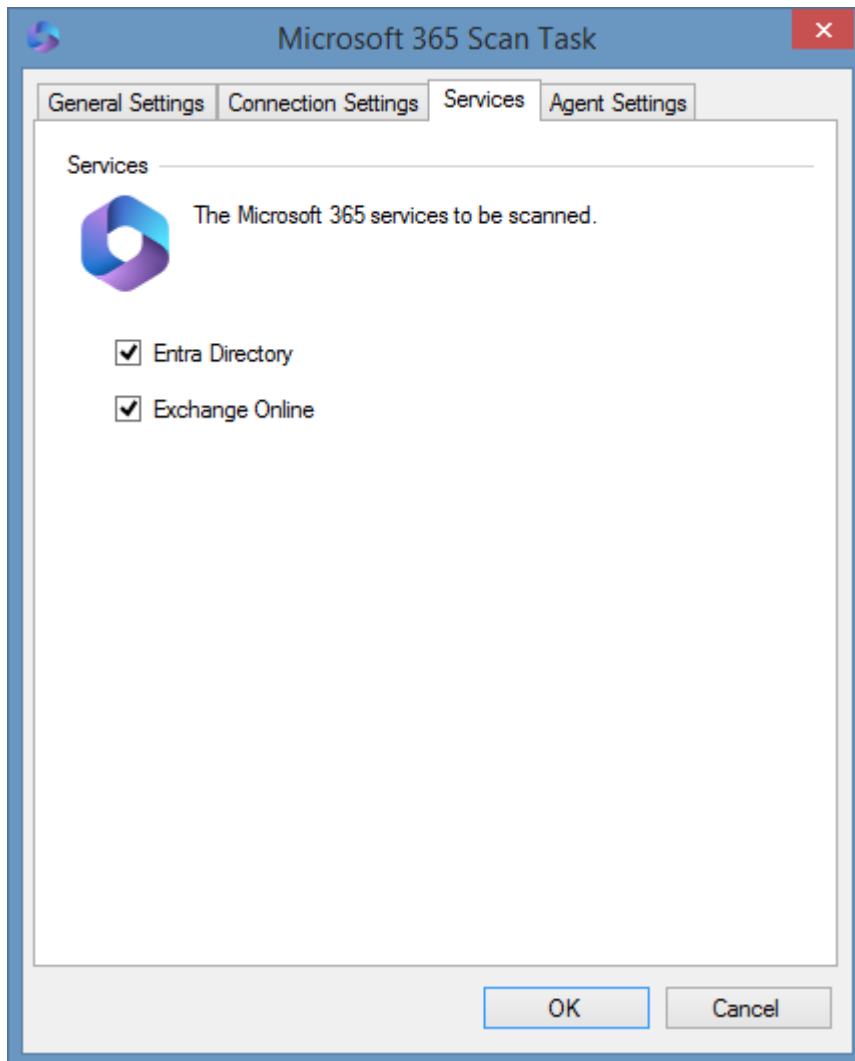
The screenshot shows a dialog box titled "Entra Directory Scan Task" with three tabs: "General Settings", "Connection Settings", and "Agent Settings". The "Connection Settings" tab is active and contains the following fields:

- Authentication Type:** Service Principal (Certificate)
- Application Identifier:** 966d9c47-68b2-4dee-9b80-71215e8488c7
- Certificate:** CENTRESolutionsClient.org
- Environment:** Public
- Tenant Identifier:** demonstration.int

Below the fields is a blue button labeled "Create Service Principal". At the bottom of the dialog, there is a link with a question mark icon: "Want to scan interactively with MFA instead?". The dialog also has "OK" and "Cancel" buttons at the bottom right.

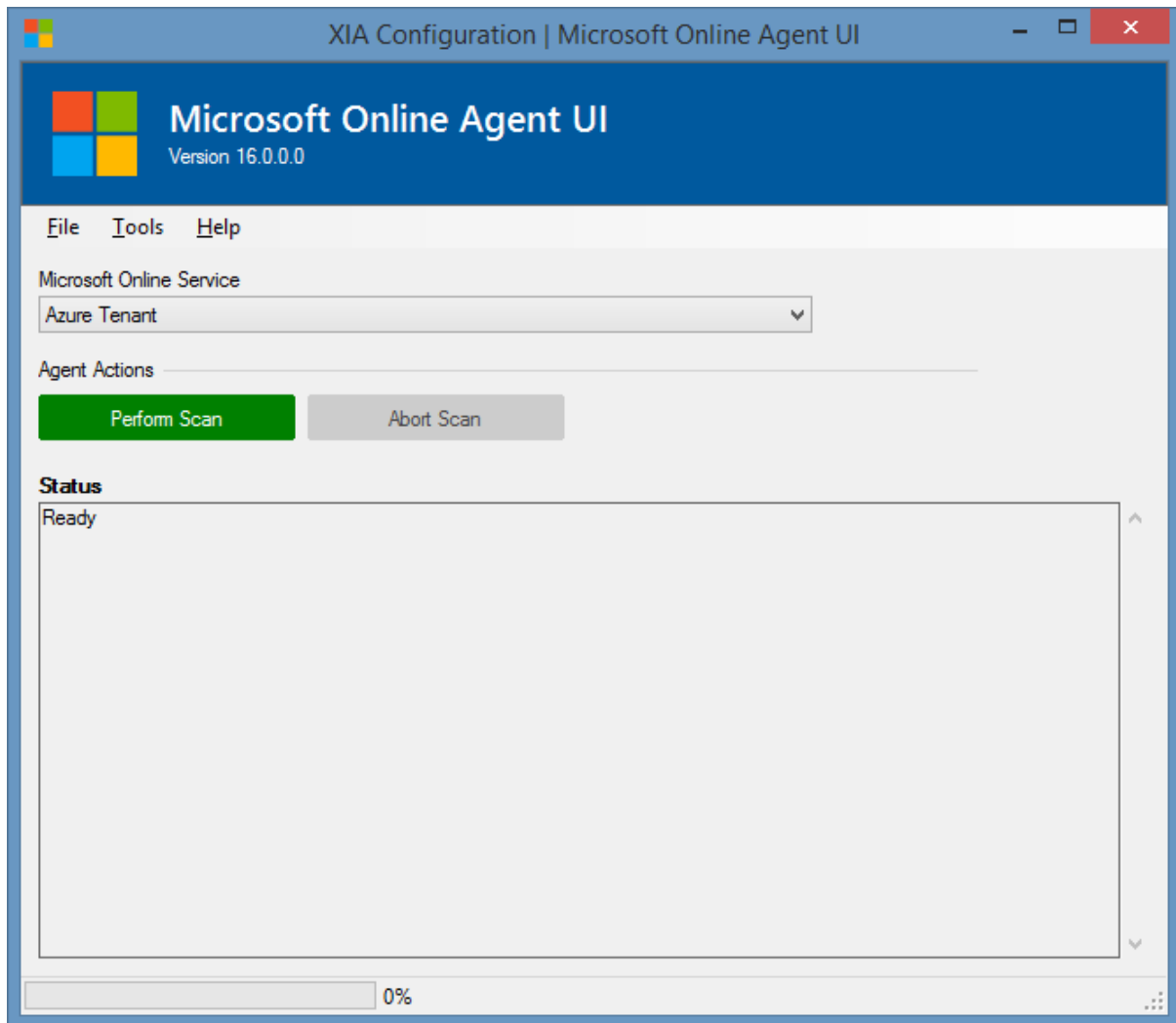
## E91078 - Added a new Microsoft 365 organization scan task

A new Microsoft 365 scan task that supports both Entra directories and Exchange Online organizations has been added.



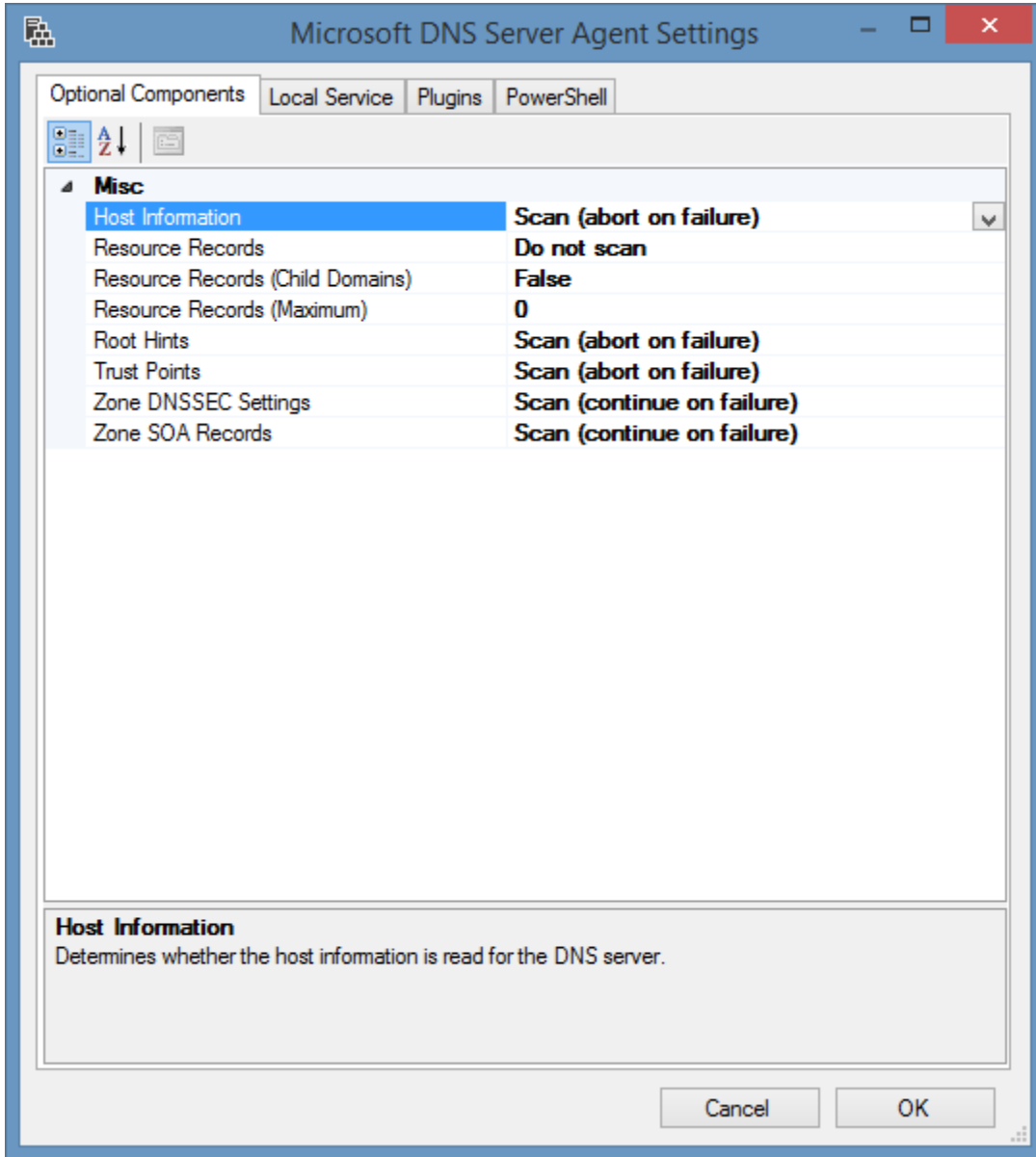
# T01092 - BREAKING: New "Microsoft 365 Agent UI" tool

Both the Exchange Online Agent UI and the Azure Tenant UI tools have been replaced by the new Microsoft Online Agent UI which is capable of scanning Azure tenants, Entra directories, and Exchange Online organizations.



# T01118 - BREAKING: Microsoft DNS Server Root Hints

The Root Hints section of the Microsoft DNS Server item type has been updated to become a bypass section and has an optional component associated with it.



Microsoft DNS Server items must be rescanned with the v16 of the XIA Configuration Client for the root hints to be visible.

## 13 Root Hints

This section does not contain any information.